

Velox

MACHINE GUARDING

**Industry's Fastest-Installing
Machine Guarding System**



HUSKY
RACK & WIRE™



1. Life Saving

Approximately 18,000 non-fatal injuries and over 800 fatal injuries occur each year to workers who operate and maintain machinery.

2. Law Abiding

OSHA 29 CFR 1910.212: One or more methods of machine guarding shall be provided to protect the operator and other employees in the machine area from hazards.

Machine Guarding is a 2017 OSHA Top 10 Most Cited Violation and has consistently been listed as a Top 10 violation for over 10 years.

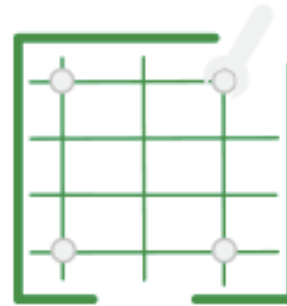


Rank	Regulation	Code	Number
1	Fall Protection General	1926.501	6,887
2	Hazard Communication	1910.12	4,652
3	Scaffolding	1926.451	3,697
4	Respiratory Protection	1910.134	3,381
5	Lockout/Tagout	1910.147	3,131
6	Ladders	1926.1053	2,567
7	Power Industrial Trucks	1910.178	2,349
8	MACHINE GUARDING	1910.212	2,109
9	Fall Protection Training	1926.503	1,724
10	Electrical Wiring Methods	1910.305	1,503

Machine Guarding has risen from #10 to #8 on the list with 2,109 violations in 2017. This quick rise to #8 in a relatively short period of time indicates that there is much needed work to be done in providing the proper protection for workers exposed to machinery.

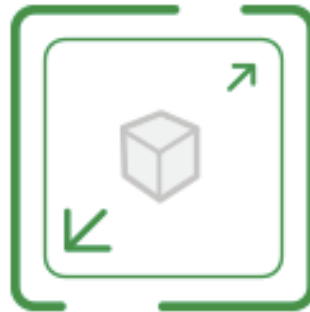
Velox is an *innovative*, *versatile* and *affordable* machine guarding systems to quickly bring your facility up to code and into compliance with regulatory safety standards.

Velox is the **fastest-installing machine guarding system** in the market, meaning you spend less time assembling and more time focusing on your bottom line.



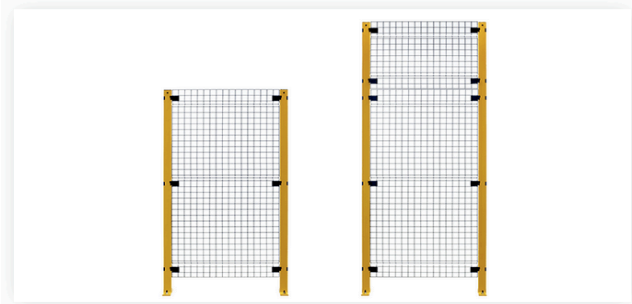
Velox can be **easily modified in the field** to create the exact machine guarding perimeter system that meets compliance standards to protect all workers.

Velox and its **innovative modular design** makes it easy to work around tight spaces and most any type of equipment to create the ideal guarding perimeter.



Velox posts offer the **greatest strength and stability** available with specially ridged panels that reinforce post strength without the bulk or weight of frames.

Velox modular components allow for quick assembly **saving time, labor and money.**



PANELS: Our non-progressive panels allow the removal of a single panel without taking down the entire run for quick assembly and replacement.



DOORS: Swing and slide door options allow for immediate and safe access that best fits your facility layout and the machinery being operated.



POSTS: Four innovative Velox post designs accommodate every combination of panel and door for a system to create the best fit for your machinery and space.

Velox Machine Guarding is designed to exceed regulatory safety standards.

- ✓ Occupational Safety & Health Administration (OSHA)
- ✓ American National Standards Institute (ANSI)
- ✓ International Organization for Standardization (ISO)
- ✓ Robotics Industry Association (RIA)
- ✓ European Norm (EN)
- ✓ Canadian Standards Association (CNA)

Velox Machine Guarding has been used in small and large projects across a variety of industries to meet with most any unique customer, equipment and layout requirement.



Velox

Why Velox?



The Velox Machine Guarding design made installation easier than ANY guarding I have worked with to date. I was pleasantly surprised at the ease with which our team was able to configure the fence. In the end, I could not envision a more efficient or cost-effective solution to the challenge.

- Mike Frank
V.P. of Engineering



After installing our Velox machine guarding cell, I can safely say that this is the best guarding we have ever used. Assembly was incredibly fast and easy, there is no loose hardware to keep track of, and you can easily modify the panels in the field!

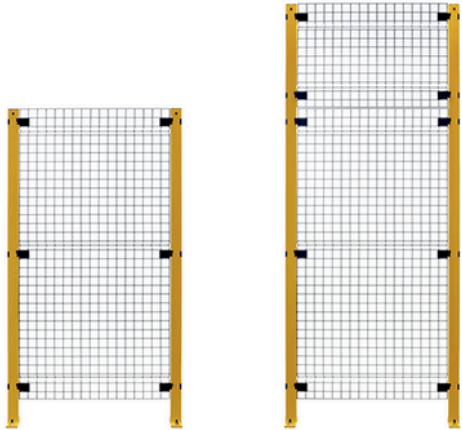
- Joe Ruscoe
Lab Manager



I have worked with Husky Rack & Wire as one of our suppliers for over 13 years and have always received great customer service from them. Their lead times and on-time shipments are never an issue. I have really enjoyed working with them as one of our major suppliers.

- Debbie Branson
Senior Buyer

PANELS



AVAILABLE FOR QUICK SHIP

2,500-pound weight limit for single 48-hour Quick Ship orders. 5,000-pound limit for orders shipped in 5-7 days.

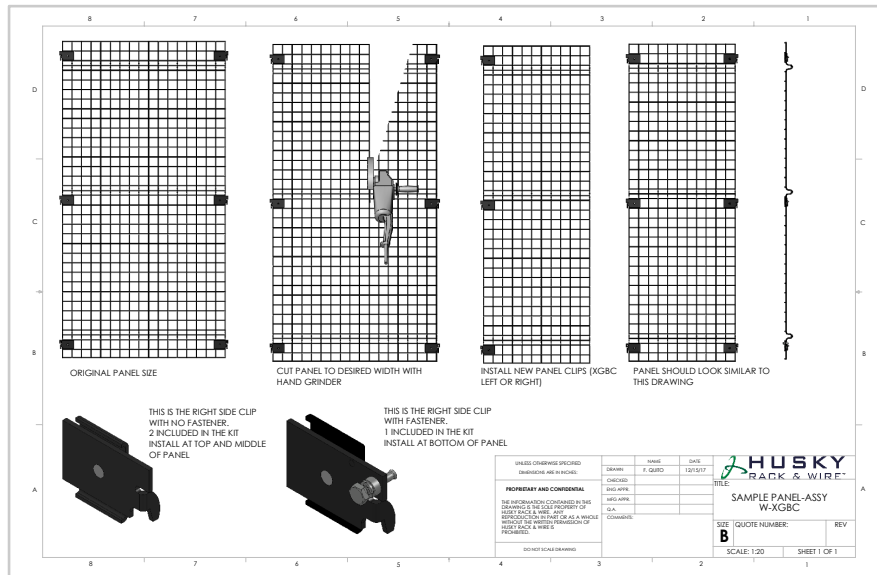
- Panels in 6- and 8-foot heights with 6-inch sweep at floor.

GENERAL INFO

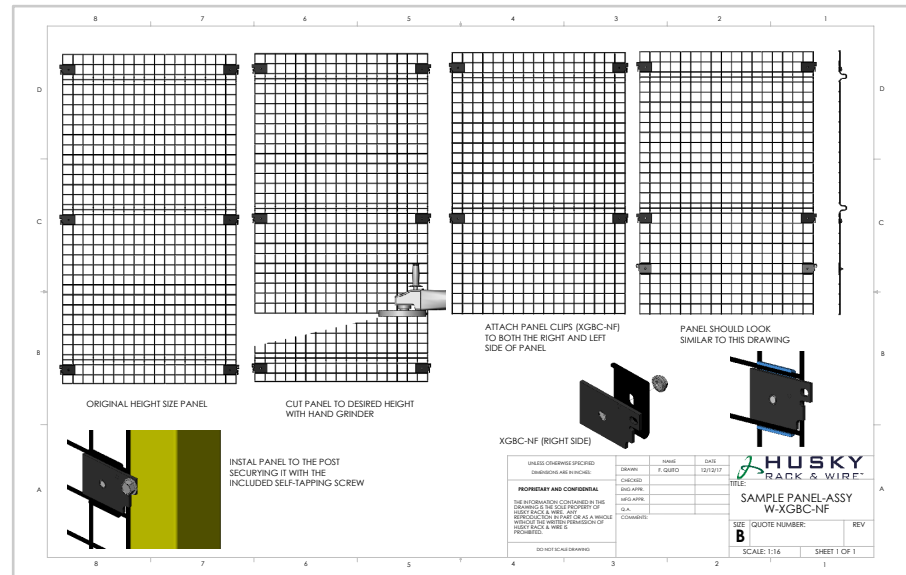
- ✓ Unframed wire mesh panels offer flexibility to modify in the field.
- ✓ Ridges bent into the panel provide strength without the cumbersome weight of typical framed panels.
- ✓ Standard black painted panels provide high-visibility system.
- ✓ Wire panels are 2" x 2" x 8-gauge welded wire mesh.
- ✓ Quickly and easily modify panel width and height in field.
- ✓ Panels available in wire mesh, clear Lexan and solid sheet metal.

NON-STANDARD panel widths and heights can be quickly and easily modified in the field with bolt-on clips to provide maximum flexibility and create the perfect fit.

QUICKLY ADJUST WIDTH



QUICKLY ADJUST HEIGHT



DOORS



AVAILABLE FOR QUICK SHIP

2,500-pound weight limit for single 48-hour Quick Ship orders. 5,000-pound limit for orders shipped in 5-7 days.

- Swing door is available in 6- and 8-foot heights with 3 and 4-foot widths.
- Slide doors available in 6- and 8-foot heights; single slide doors in 3-, 4- and 5-foot widths; double slide doors in 6- and 8-foot widths.

GENERAL INFO

- ✓ Swing door styles include both **single** and **double** swing.
- ✓ Swing doors have option for hinge left or right.
- ✓ Slide door styles include both **single** and **double** slide.
- ✓ All doors equipped with standard snap latch.
- ✓ Fortress electric auto shut-off door locks available with setup in field.
- ✓ Posts and fixed panels not included in door pricing.



POSTS



AVAILABLE FOR QUICK SHIP

2,500-pound weight limit for single 48-hour Quick Ship orders. 5,000-pound limit for orders shipped in 5-7 days.

◦ Posts in 6- and 8-foot heights.

GENERAL INFO

- ✓ Four post styles for: (1) swing doors, (2) slide doors, (3) adjustable corner posts for non-90 degree corners, and (4) line posts for straight runs and 90 degree corners.
- ✓ Heavy duty anchors included with every post order to ensure strength and stability.
- ✓ Door and line posts are 2½" square tube.
- ✓ All posts come in standard safety yellow paint color.
- ✓ Post height equals overall height of assembled system.



GENERAL INFO

- ✓ Equipped with a standard snap latch.
- ✓ Fortress safety interlock system available.

- ✓ Innovative, Versatile & Affordable Machine Guarding
- ✓ Industry's Fastest-Installing Guarding System
- ✓ Proper Protection For Employees & Equipment
- ✓ Engineering Design Exceeds Regulatory Safety Standards
- ✓ OSHA Top 10 Compliance Solution (29 CFR 1910.212)
- ✓ Modular Components Allow For Space Efficient Layout
- ✓ Field Modification Enables Quick Customization & Assembly

Velox

Contact Us



Lori Laws

Wire | Inside Sales Manager

Office: (704) 483-1900 | Ext. 580

Email: llaws@huskyrackandwire.com

James Brooks

Product Engineer

Office: (704) 483-1900 | Ext. 519

Email: jbrooks@huskyrackandwire.com

Al Seguin

Manager | Guard Channel

Office: (770) 578-6881

Mobile: (770) 315-7836

Email: aseguin@huskyrackandwire.com